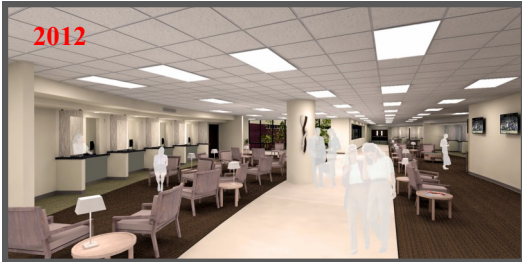


# Project Design

## UNDER CONSTRUCTION



Future Diagnostic Imaging Reception & Waiting Room



Future Physical Therapy Room



Future Café Room

**We are currently working to improve your environment of Care.**

Thank you for your patience during construction. We apologize for any inconvenience.



**US Army Corps of Engineers®**

**UNITED  
EXCEL**



**MILL CREEK**

# TRAVIS AFB

## Construction Newsletter



**David Grant Medical Center  
Phase II  
Hospital Modernization**



**Fall 2012**



# UNDER CONSTRUCTION FALL 2012

## David Grant USAF Medical Center

David Grant Medical Center, Travis Air Force Base is proud to announce the start of construction for the Phase II modernization project. This multi-departmental enhancement will include Diagnostic Imaging, Optometry, Allergy/Immunizations, Ear/Nose/Throat (ENT), Musculoskeletal as well as a Café; continuing with the 60TH Medical Group's Vision of "A Premier national medical center fostering innovation, setting benchmarks... preparing warriors for today and tomorrow."

### MUSCULOSKELETAL (MS)

The new MS Clinic will co-locate Podiatry, Chiropractic, Orthopedics, Occupational Therapy and Physical Therapy into a fully integrated symbiotic operational space. New equipment, space and furniture will add to the quality of care.

Renovation commences December 2012 with an expected completion in summer of 2014. During construction, Orthopedics will relocate temporarily next door to their current space; all other departments will remain in place.



## Wall Breaking Ceremony

July 2012

Photo: Mr. Lewis Martin, Col. Kevin Connolly,  
Col. David Copp and Col. Doreen Wilder

### DIAGNOSTIC IMAGING

The Diagnostic Imaging department will receive a complete makeover and brand new state of the art radiologic equipment: a new Mammography 3D Tomographic System, Hologic Bone Density System, Digital Radiographic system, Single and Biplane Angiography suites as well as an Angiography CT Scanner. The renovations began with Interventional Radiology in October 2012 and will incorporate each modality with an overall completion date of summer 2014. Sections will rotate internally to accommodate renovations.

### OPTOMETRY, ENT & ALLERGY/IMMUNIZATIONS (AI)

Optometry and AI will be relocated to the second floor after construction; their complete remodeling will include state of the art equipment as well as aesthetically pleasing furnishings that will continue to enhance the environment of care and augment the overall quality of care. The ENT clinic will occupy the space vacated by AI after similar renovations and upgrades. These departments will remain in their current location until their future locations are completed in spring/summer 2013.

### CAFÉ

The appropriately named "GRANT CENTRAL STATION" will provide an ambience of tranquility; with its various coffee shop style seating and vibrant décor. This space will have a variety of coffee refreshments and pastries for visitors and staff. The café is scheduled to open in the summer of 2014.

