

- LEGEND**
- PERFORMANCE MONITORING WELL
 - ★ EXTRACTION WELL
 - ★ PROPOSED EXTRACTION WELL
 - TCE CONCENTRATIONS (µg/L)**
 - 5 ≤ TCE < 100
 - EASEMENT
 - SURFACE WATER/VERNAL POOL
 - WETLANDS
 - BASE BOUNDARY
 - APPROXIMATE EXTENT OF HYDRAULIC CAPTURE
 - UNTREATED WATER PIPING
 - APPROXIMATE GROUNDWATER FLOW DIRECTION
 - PROPOSED UNTREATED WATER PIPING

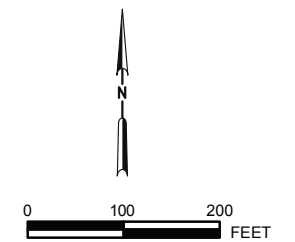
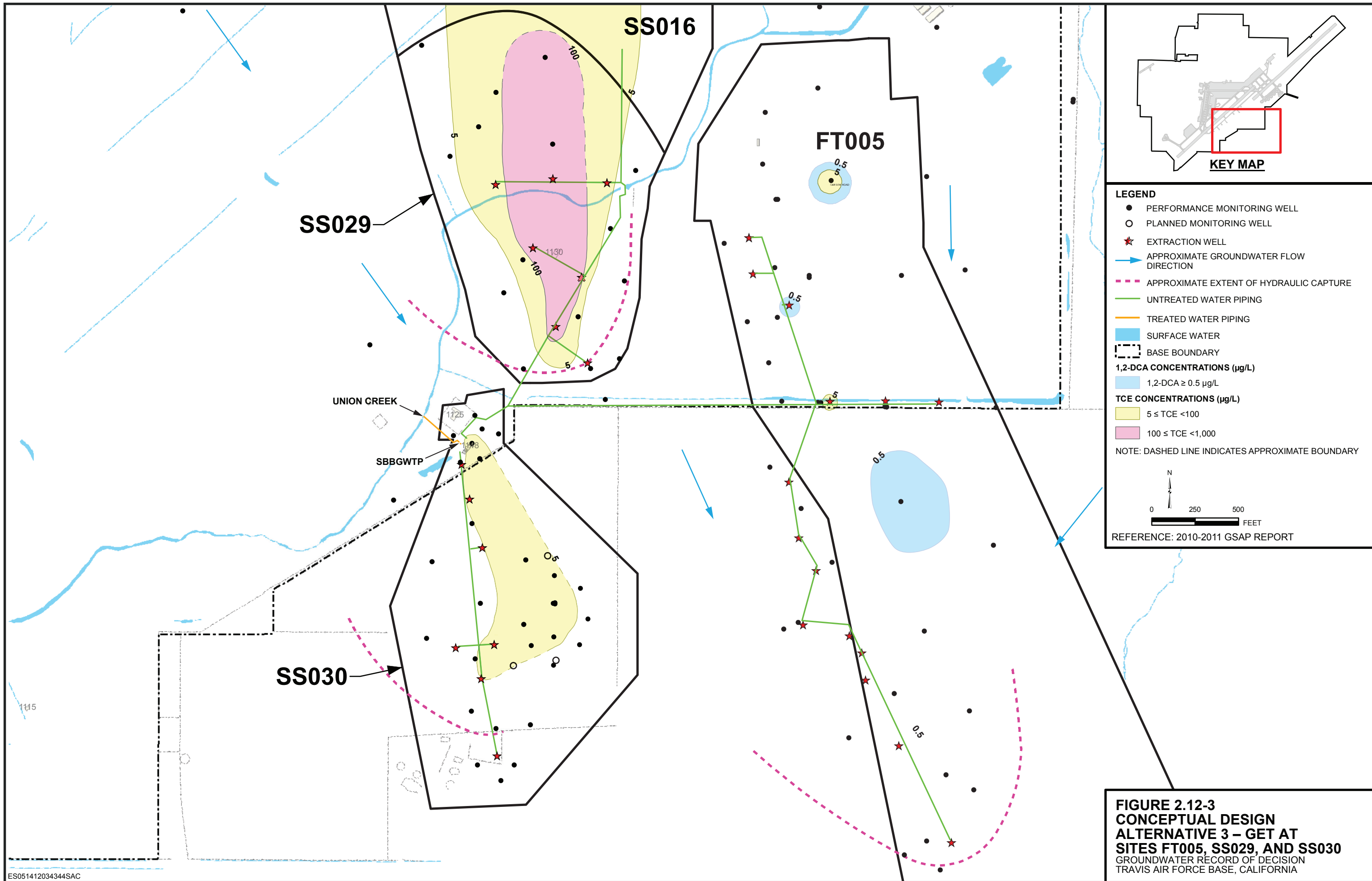


FIGURE 2.12.-2
CONCEPTUAL DESIGN
ALTERNATIVE 3 – GET AT SITE LF007C
 GROUNDWATER RECORD OF DECISION
 TRAVIS AIR FORCE BASE, CALIFORNIA



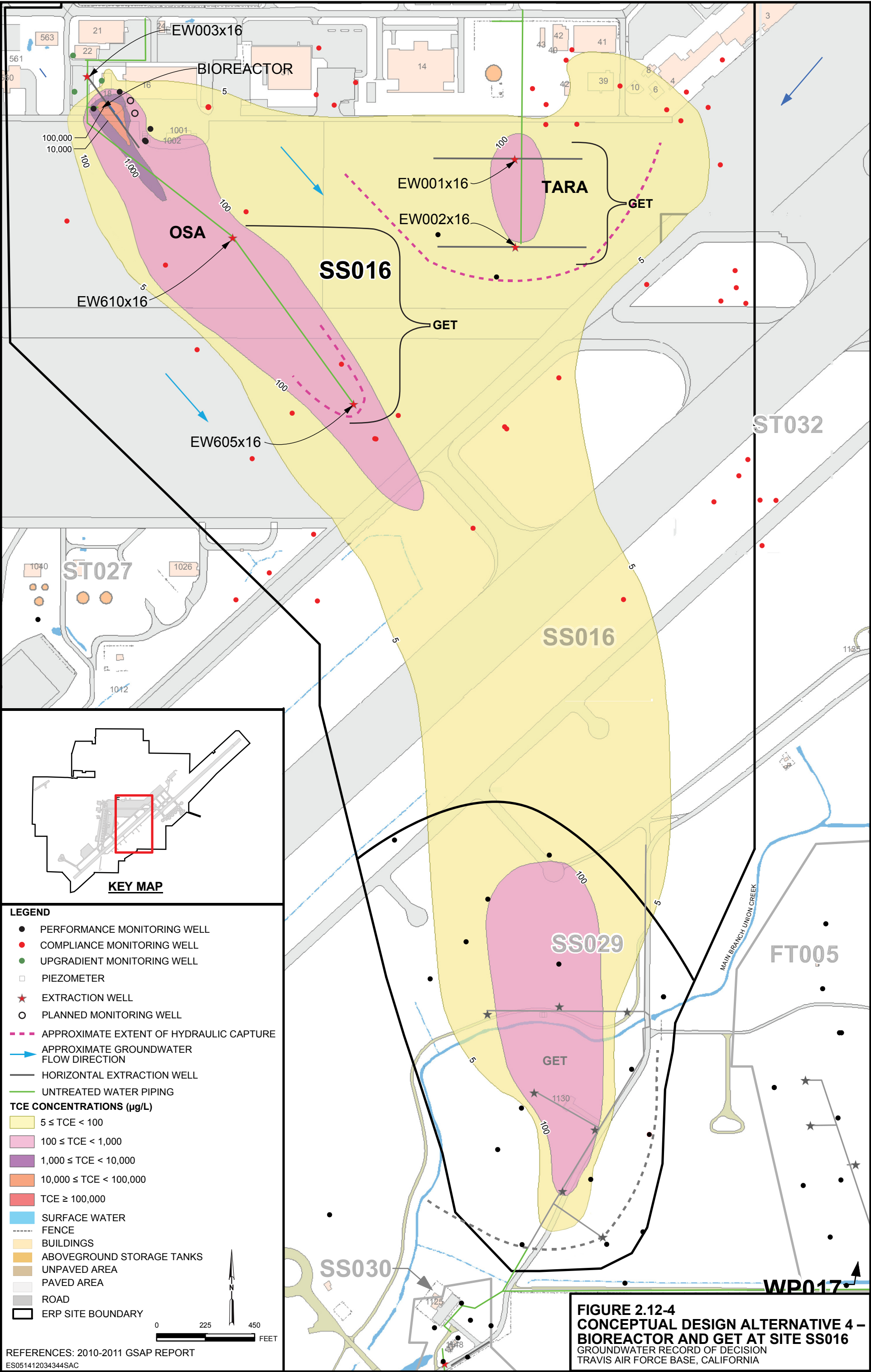


FIGURE 2.12-4
CONCEPTUAL DESIGN ALTERNATIVE 4 –
BIOREACTOR AND GET AT SITE SS016
GROUNDWATER RECORD OF DECISION
TRAVIS AIR FORCE BASE, CALIFORNIA

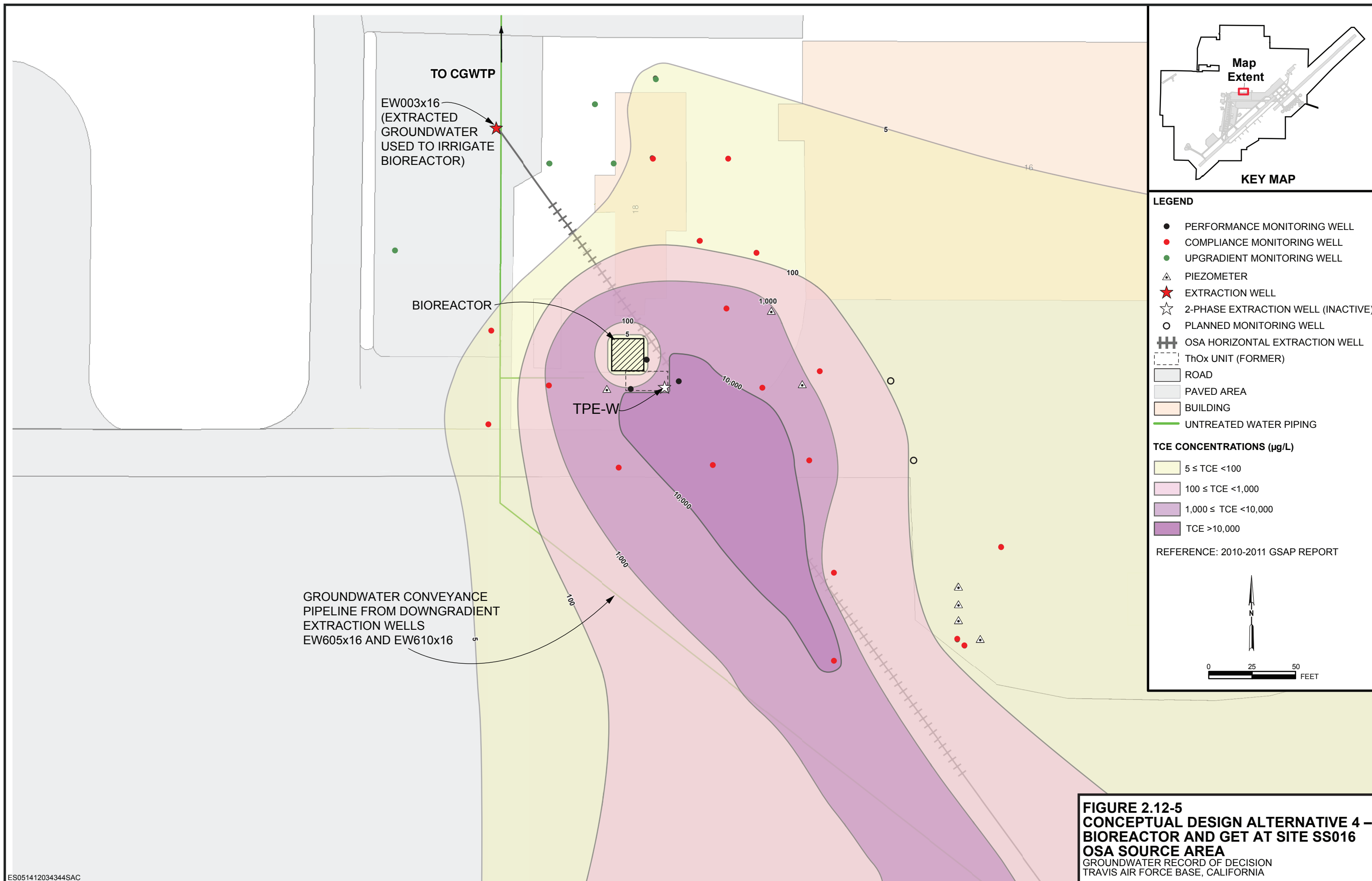
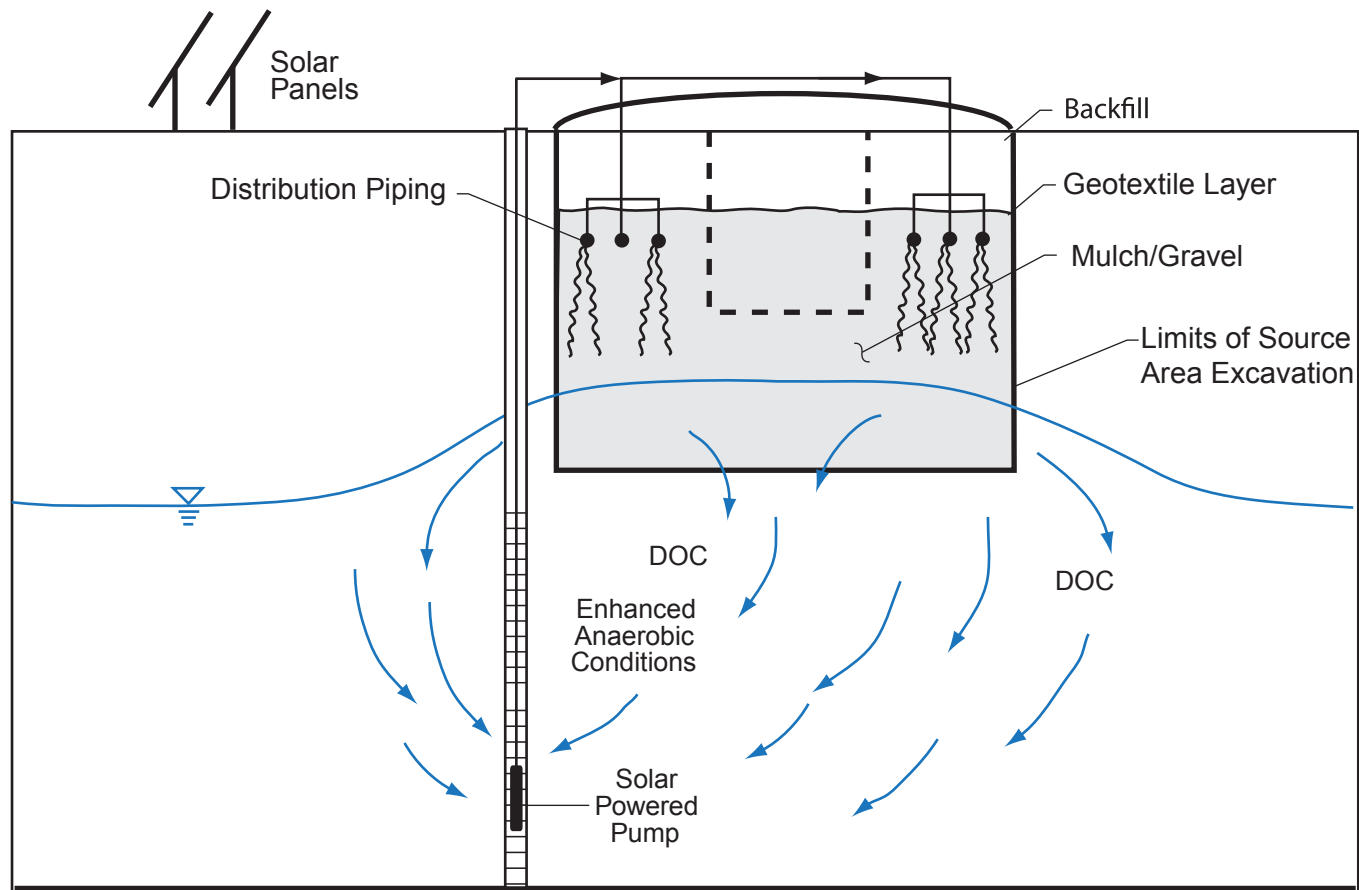


FIGURE 2.12-5
CONCEPTUAL DESIGN ALTERNATIVE 4 –
BIOREACTOR AND GET AT SITE SS016
OSA SOURCE AREA
GROUNDWATER RECORD OF DECISION
TRAVIS AIR FORCE BASE, CALIFORNIA



LEGEND


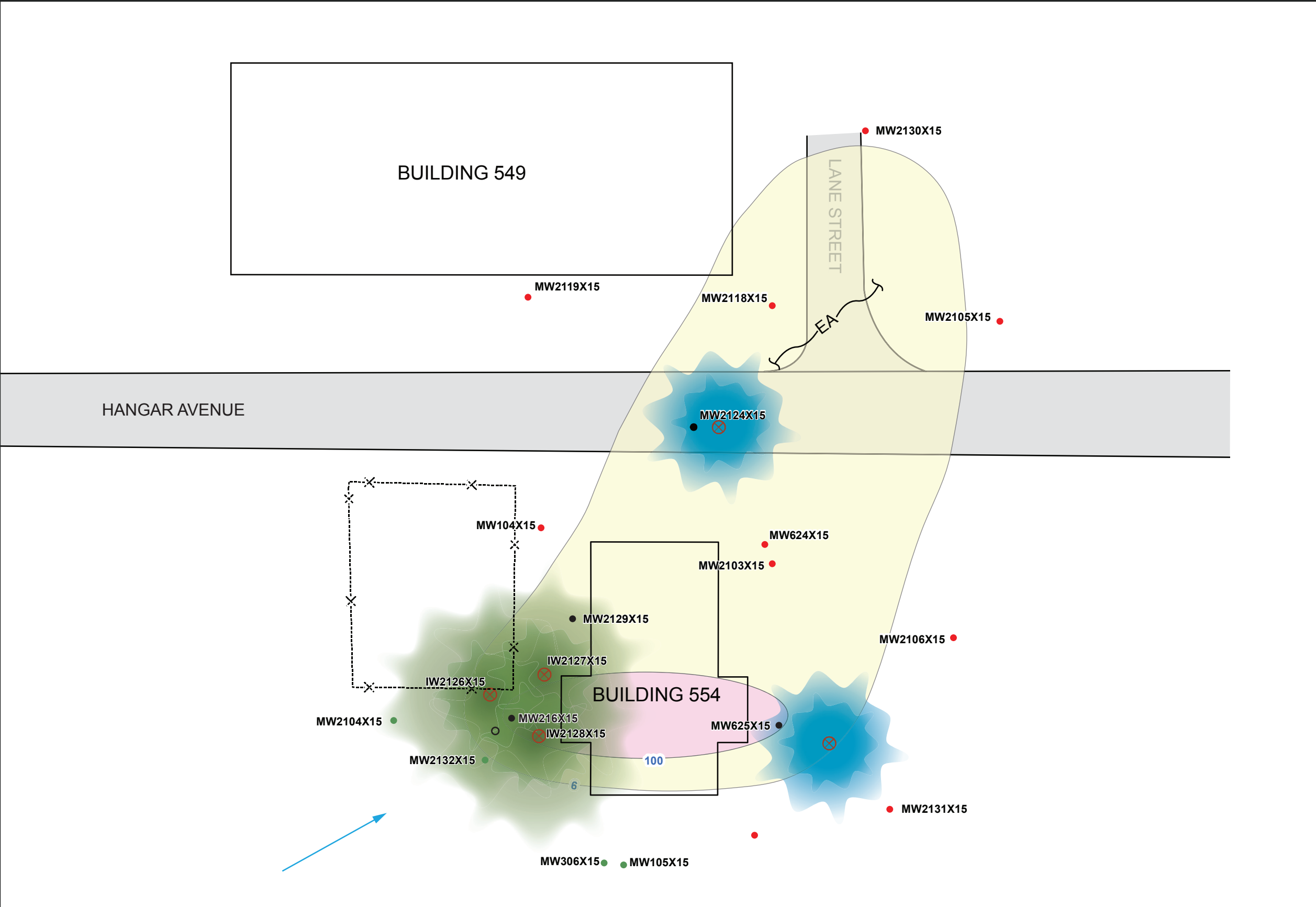
-  Groundwater Flow Direction
- DOC Dissolved Organic Carbon

FIGURE 2.12-6
CONCEPTUAL DESIGN
ALTERNATIVES 4 AND 6
TYPICAL BIOREACTOR CROSS SECTION
 GROUNDWATER RECORD OF DECISION
 TRAVIS AIR FORCE BASE, CALIFORNIA



KEY MAP

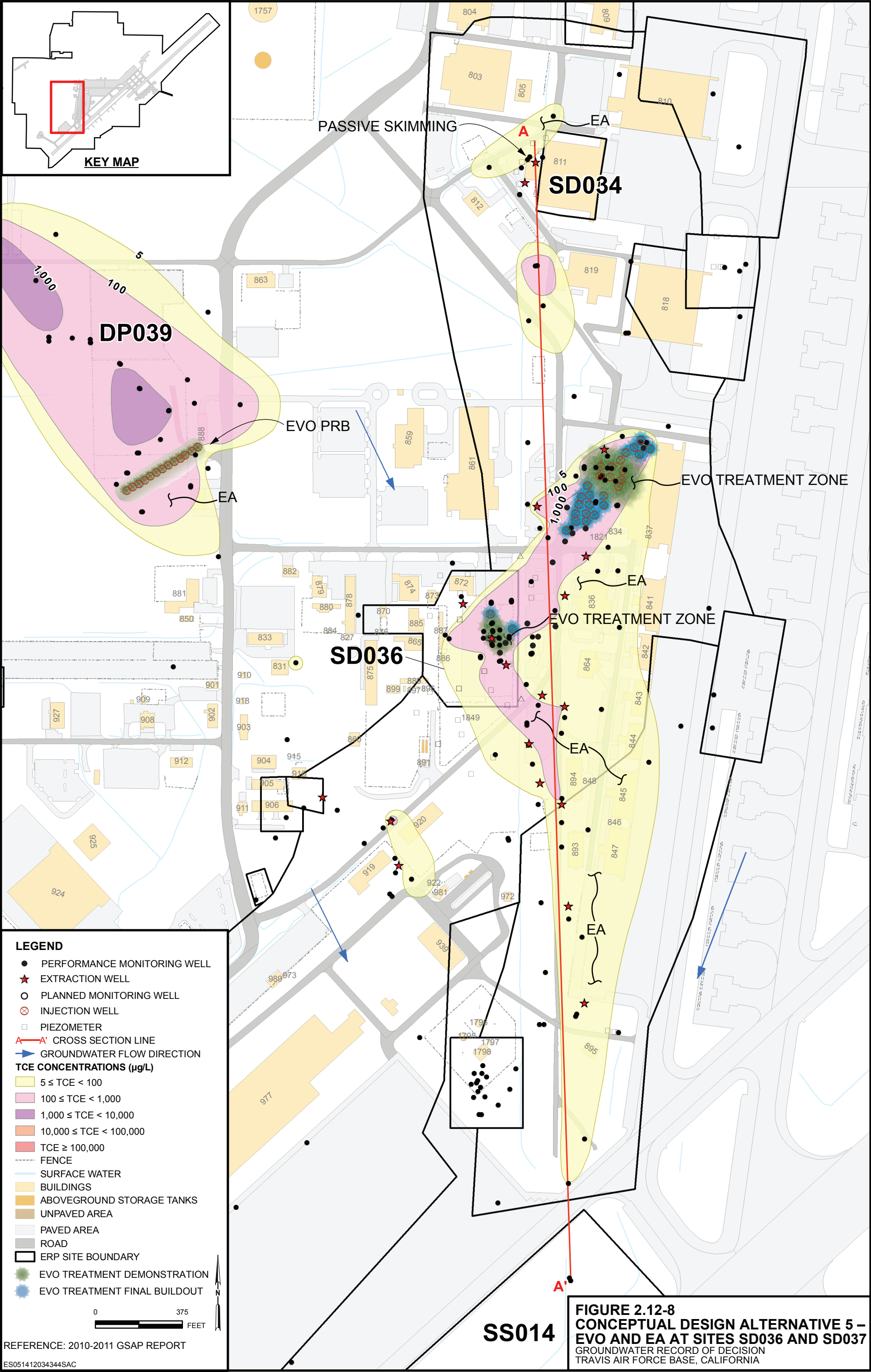
LEGEND

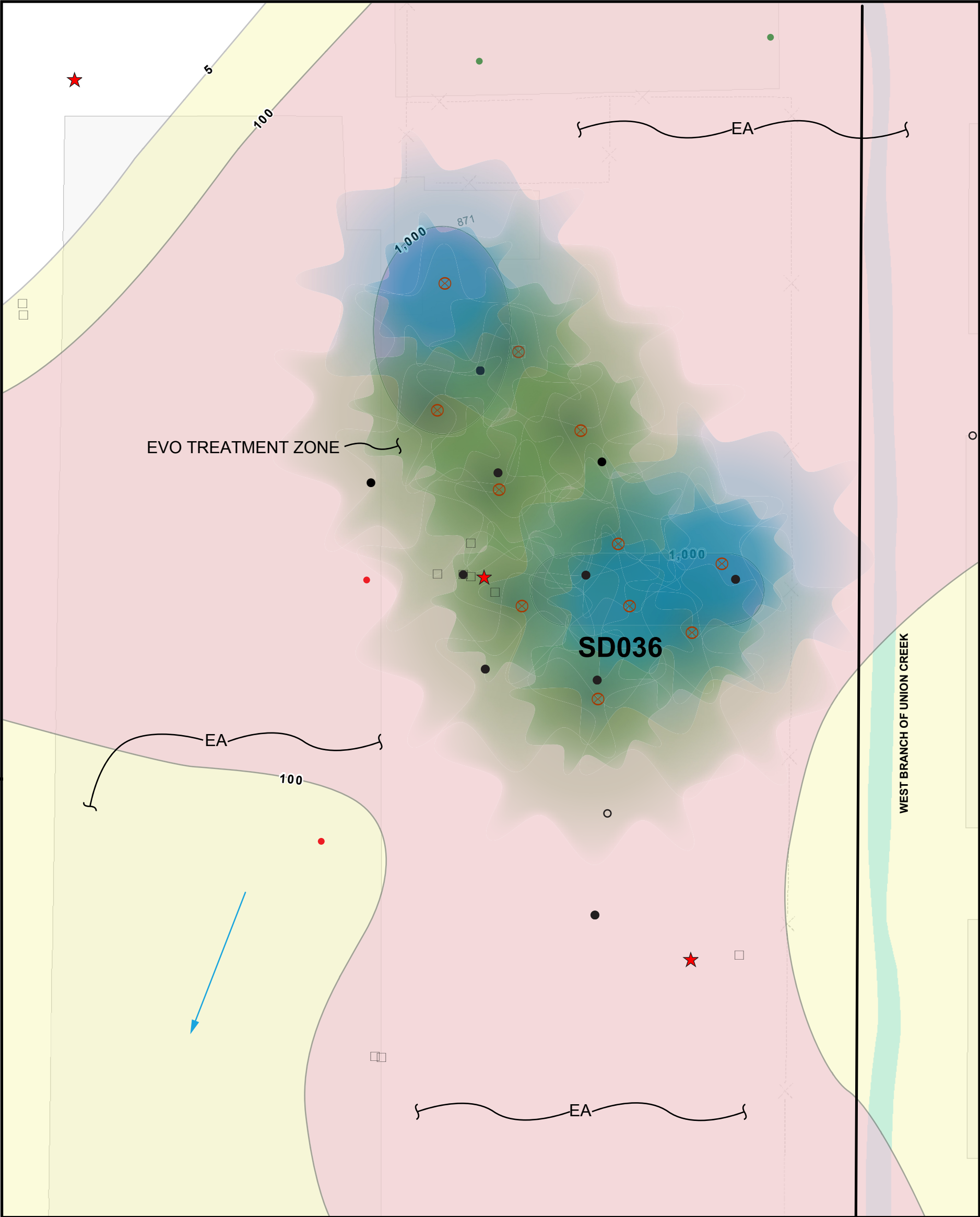
- PERFORMANCE MONITORING WELL
- COMPLIANCE MONITORING WELL
- UPGRADIENT MONITORING WELL
- PLANNED MONITORING WELL
- ⊗ EVO INJECTION WELL
- ➡ LOCAL GROUNDWATER FLOW DIRECTION
- 6 CIS-1,2-DCE CONCENTRATIONS CONTOUR (µg/L)
- 6 ≤ CIS-1,2-DCE < 100
- 100 ≤ CIS-1,2-DCE < 1,000
- CIS-1,2-DCE ≥ 1,000
- EVO TREATMENT DEMONSTRATION
- EVO TREATMENT FINAL BUILDOUT
- X--- FENCE

REFERENCE: 2010-2011 GSAP REPORT

0 25 100 FEET

FIGURE 2.12-7
CONCEPTUAL DESIGN
ALTERNATIVE 5 – EVO AND EA
AT SITE SS015
GROUNDWATER RECORD OF DECISION
TRAVIS AIR FORCE BASE, CALIFORNIA





LEGEND

- PERFORMANCE MONITORING WELL
- COMPLIANCE MONITORING WELL
- UPGRADIENT MONITORING WELL
- PLANNED MONITORING WELL
- PIEZOMETER
- ★ EXTRACTION WELL (INACTIVE)
- ⊗ EVO INJECTION WELL
- EVO TREATMENT DEMONSTRATION
- EVO TREATMENT FINAL BUILDOUT
- APPROXIMATE GROUNDWATER FLOW DIRECTION
- FENCE
- ROAD
- PAVED AREA
- BUILDING
- ERP SITE BOUNDARY

TCE CONCENTRATIONS (µg/L)

- 5 ≤ TCE < 100
- 100 ≤ TCE < 1,000
- 1,000 ≤ TCE < 10,000
- SURFACE WATER

REFERENCE: 2010-2011 GSAP REPORT

KEY MAP

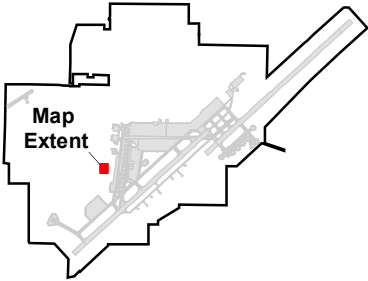


FIGURE 2-12.9
CONCEPTUAL DESIGN ALTERNATIVE 5 –
EVO AND EA AT SITE SD036
GROUNDWATER RECORD OF DECISION
TRAVIS AIR FORCE BASE, CALIFORNIA

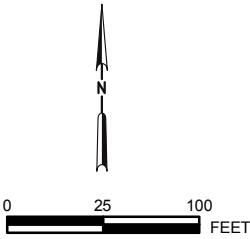


LEGEND

- PERFORMANCE MONITORING WELL
- COMPLIANCE MONITORING WELL
- UPGRADIENT MONITORING WELL
- ★ EXTRACTION WELL (INACTIVE)
- PLANNED MONITORING WELL
- ⊗ EVO INJECTION WELL
- EVO TREATMENT DEMONSTRATION
- EVO TREATMENT FINAL BUILDOUT
- ➡ APPROXIMATE GROUNDWATER FLOW DIRECTION
- FENCE
- ROAD
- PAVED AREA
- BUILDING
- ERP SITE BOUNDARY

TCE CONCENTRATIONS (µg/L)

- 5 ≤ TCE < 100
- 100 ≤ TCE < 1,000
- TCE ≥ 1,000



KEY MAP

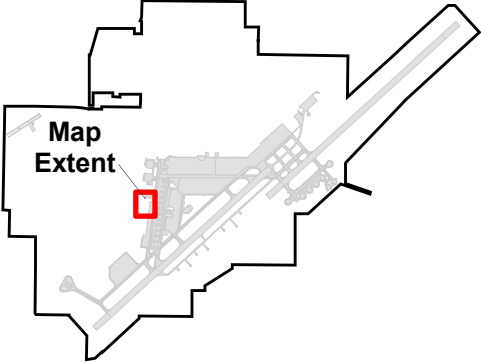


FIGURE 2.12-10
CONCEPTUAL DESIGN
ALTERNATIVE 5 – EVO AND EA AT SITE SD037
GROUNDWATER RECORD OF DECISION
TRAVIS AIR FORCE BASE, CALIFORNIA

